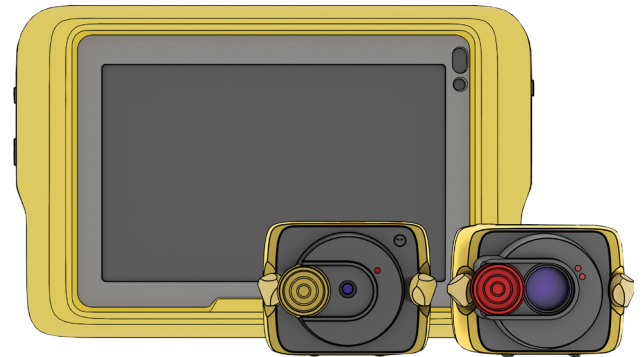


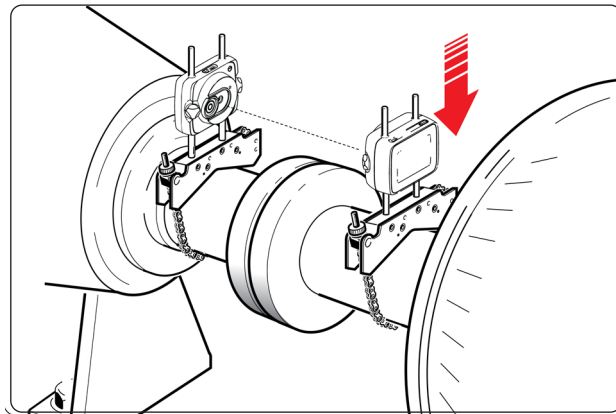
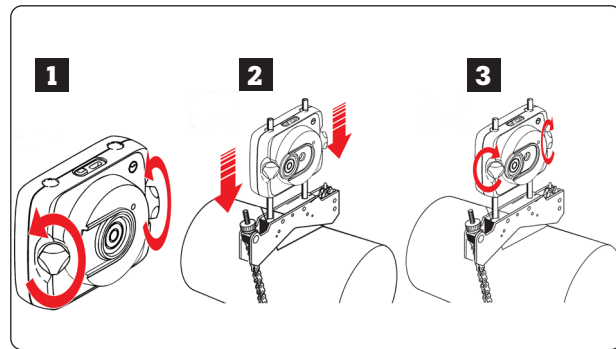
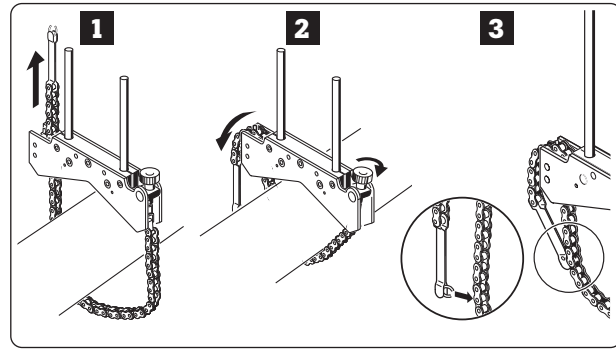
# RotAlign™ Core



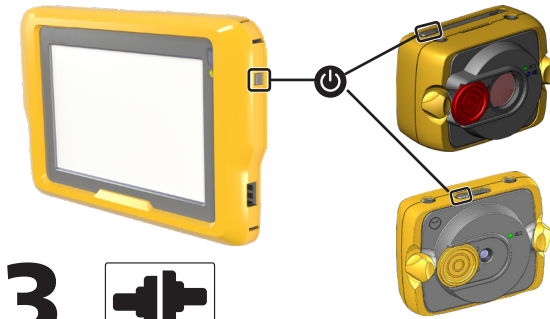
PN 6082361 June 2025  
© 2025 Fluke Corporation. All rights reserved.  
Specifications are subject to change without notice.  
[www.fluke.com](http://www.fluke.com)

DOC 54.102 [www.pruftechnik.com](http://www.pruftechnik.com)

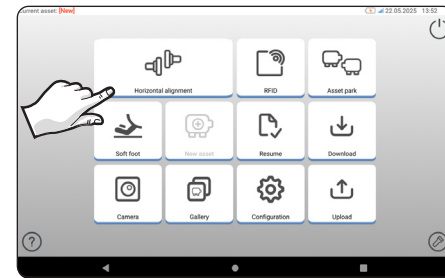
# 1



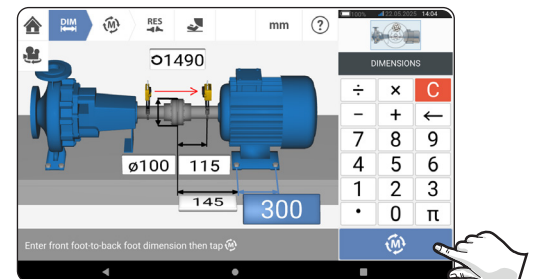
# 2



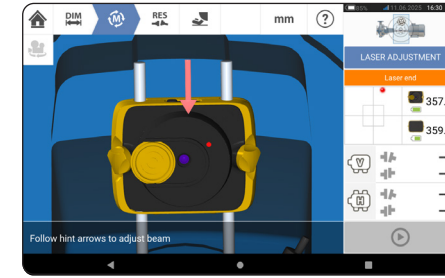
# 3



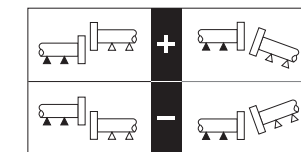
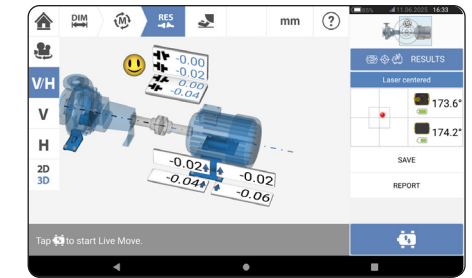
# 4



# 5



# 6



C	/100 mm		/10"	
	OK (mm)	!! (mm)	OK (mil)	!! (mil)
600	0.15	0.10	14.9	10.0
750	0.12	0.08	12.3	8.2
900	0.10	0.07	10.5	7.0
1000	0.10	0.06	9.6	6.4
1200	0.08	0.05	8.2	5.4
1500	0.07	0.04	6.7	4.5
1800	0.06	0.04	5.7	3.8
3000	0.04	0.02	3.7	2.5
3600	0.03	0.02	3.1	2.1
6000	0.02	0.01	2.0	1.3
7200	0.02	0.01	1.7	1.1

C	/100 mm		/10"	
	OK (mm)	!! (mm)	OK (mil)	!! (mil)
600	0.23	0.13	9.0	5.1
750	0.18	0.10	7.3	4.1
900	0.16	0.09	6.1	3.4
1000	0.14	0.08	5.5	3.1
1200	0.12	0.07	4.6	2.6
1500	0.09	0.05	3.7	2.1
1800	0.08	0.04	3.1	1.8
3000	0.05	0.03	1.9	1.1
3600	0.04	0.02	1.6	0.9
6000	0.02	0.01	1.0	0.6
7200	0.02	0.01	0.8	0.5